



QUALITY MOBILE STORAGE SOLUTIONS
FOR TODAY'S CONTRACTOR

WESTCANMANUFACTURING.COM



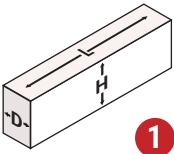
NISSAN

NV & NV200

ALUMINUM PRODUCT GUIDE

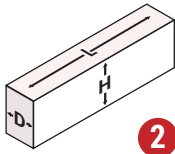


Vehicle Dimensions



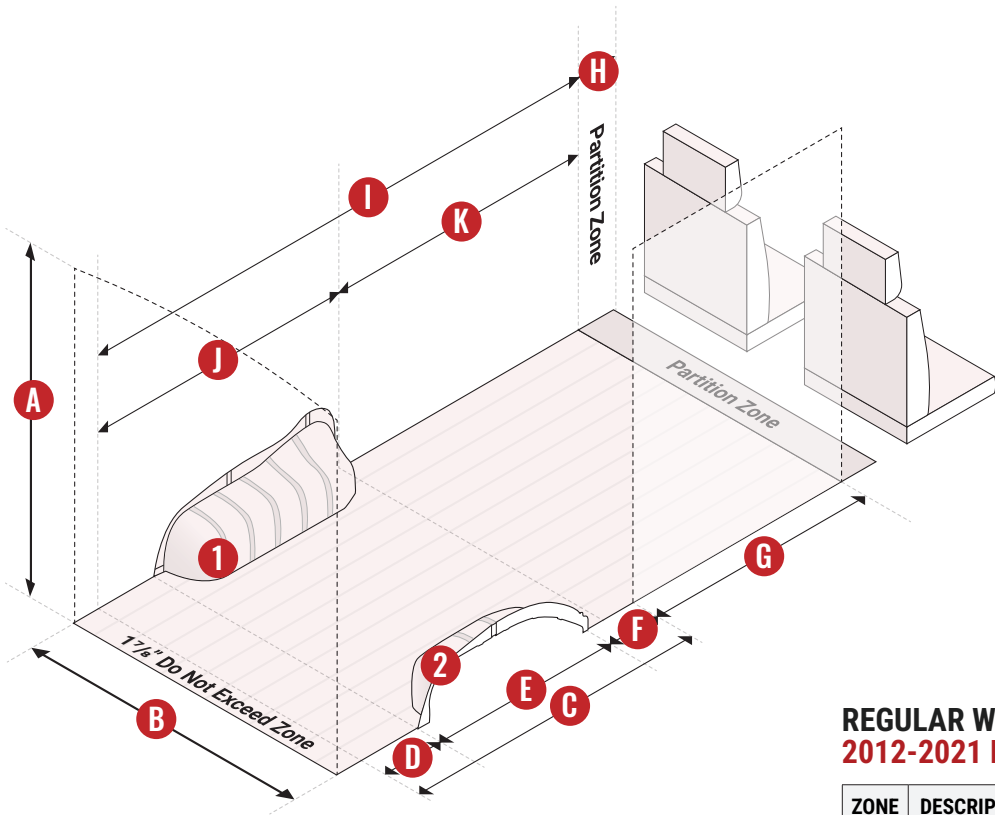
DRIVER SIDE NV
WHEEL WELL DIMENSIONS

L	D	H
37 ⁵ / ₈ "	8 ³ / ₁₆ "	11 ⁷ / ₈ "



PASSENGER SIDE NV
WHEEL WELL DIMENSIONS

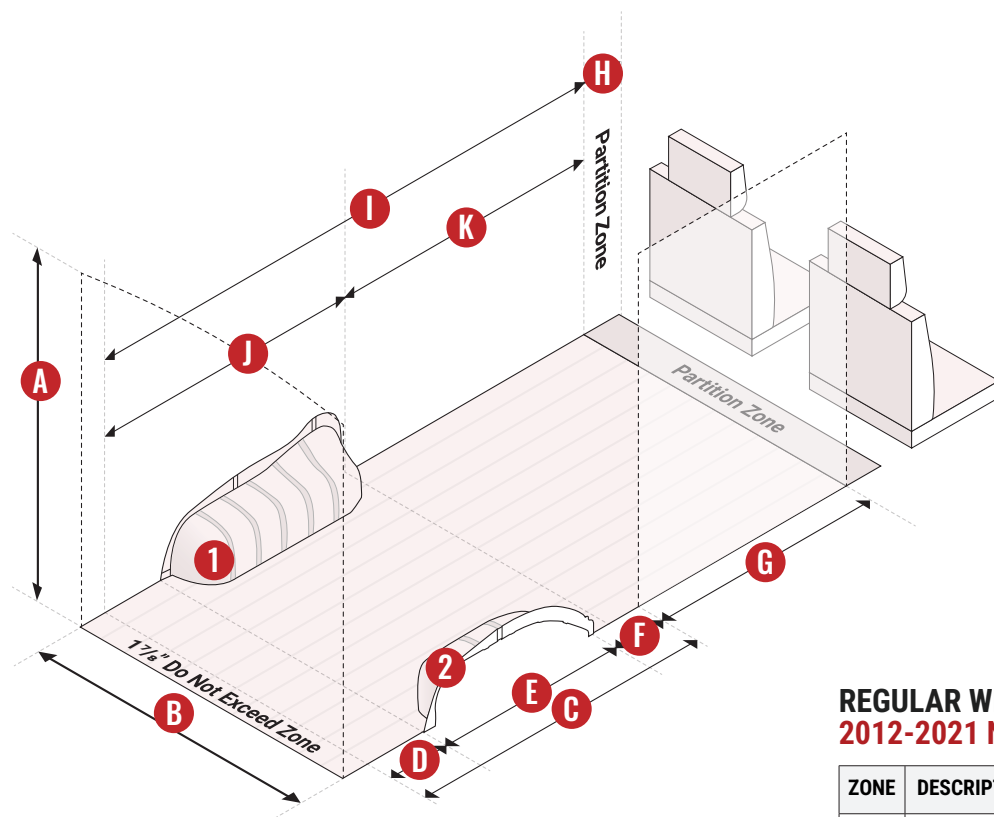
L	D	H
34 ⁵ / ₈ "	7 ⁷ / ₈ "	9 ³ / ₈ "



REGULAR WB STANDARD ROOF
2012-2021 NV 1500/2500/3500

ZONE	DESCRIPTION	LENGTH
A	Usable Roof Height	50 ³ / ₄ "
B	Van Depth	61 ¹ / ₄ "
C	Door Opening to Rear End	55 ¹ / ₈ " 58 ¹ / ₈ "
D	Post-Wheel Well Zone	15 ³ / ₈ "
E	Wheel Well Obstruction	37 ⁵ / ₈ " 34 ⁵ / ₈ "
F	Pre-Wheel Well Zone	3 ¹ / ₈ " 6 ¹ / ₈ "
G	Door Opening (Includes Trim)	43 ³ / ₁₆ "
H	Partition Zone	6 ³ / ₈ "
I	Available Cargo Space	101 ⁵ / ₁₆ "
J	Wheel Well to Rear End	52"
K	Partition Zone to Wheel Well	49 ⁵ / ₁₆ "

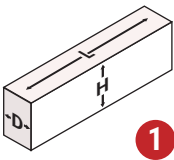
Vehicle Dimensions



REGULAR WB HIGH ROOF 2012-2021 NV 1500/2500/3500

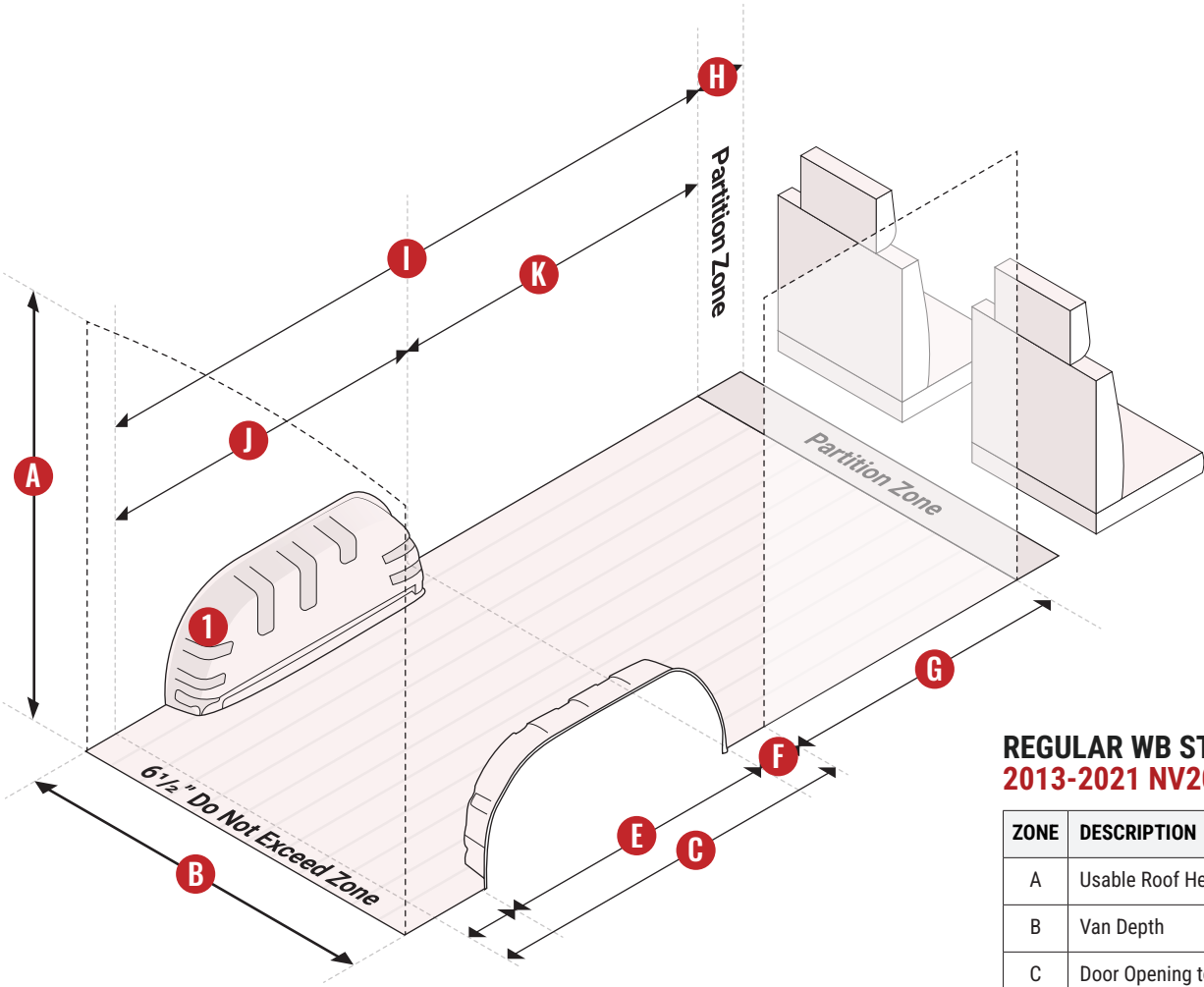
ZONE	DESCRIPTION	LENGTH
A	Usable Roof Height	72 1/8"
B	Van Depth	61 1/4"
C	Door Opening to Rear End	55 1/8" 58 1/8"
D	Post-Wheel Well Zone	15 3/8"
E	Wheel Well Obstruction	37 5/8" 34 5/8"
F	Pre-Wheel Well Zone	3 1/8" 6 1/8"
G	Door Opening (Includes Trim)	43 3/16"
H	Partition Zone	6 3/8"
I	Available Cargo Space	101 5/16"
J	Wheel Well to Rear End	52"
K	Partition Zone to Wheel Well	49 5/16"

Vehicle Dimensions



NV200
WHEEL WELL DIMENSIONS

L	D	H
29 5/8"	4"	11"



WHEEL WELL NOTES

The rear wheel wells in Nissan’s NV are irregularly shaped which means they differ in length, depth, and height. Additionally, the driver’s side wheel well incorporates the fuel filler. Please double check your measurments when planning your upfit.

REGULAR WB STANDARD ROOF 2013-2021 NV200

ZONE	DESCRIPTION	LENGTH
A	Usable Roof Height	51 1/4"
B	Van Depth	43 1/2"
C	Door Opening to Rear End	30 5/8"
D	Post-Wheel Well Zone	1/8"
E	Wheel Well Obstruction	29 5/8"
F	Pre-Wheel Well Zone	7/8"
G	Door Opening (Includes Trim)	29"
H	Partition Zone	3 3/8"
I	Available Cargo Space	59 5/8"
J	Wheel Well to Rear End	29 3/4"
K	Partition Zone to Wheel Well	29 7/8"

Partitions

KEY FEATURES

Heavy-Duty Construction

Made from premium aluminum, Westcan partitions are built to withstand daily use, offering durable protection without adding extra weight to your vehicle.

Lightweight and Corrosion-Resistant

Aluminum provides the perfect balance of strength and lightness, preserving payload capacity. Its corrosion resistance ensures it won't rust even in tough conditions.

Enhanced Visibility and Ventilation

Our partitions feature optional perforations or windows that allow for improved rear visibility and air circulation, ensuring both safety and comfort for the driver.

No-Drill Installation

Westcan aluminum partitions are designed for easy installation without the need for drilling, preserving your vehicle's structure while ensuring a secure fit.



BENEFITS

Increased Driver Safety

Aluminum partitions create a strong barrier, preventing cargo from shifting into the driver's area during sudden stops or accidents.

Enhanced Organization and Security

Partitions separate the cab from the cargo, keeping your van organized and preventing items from encroaching into the driver's area.

Reduced Noise and Distraction

Westcan partitions help block out noise from the cargo area, creating a more focused driving environment.

Professional Appearance

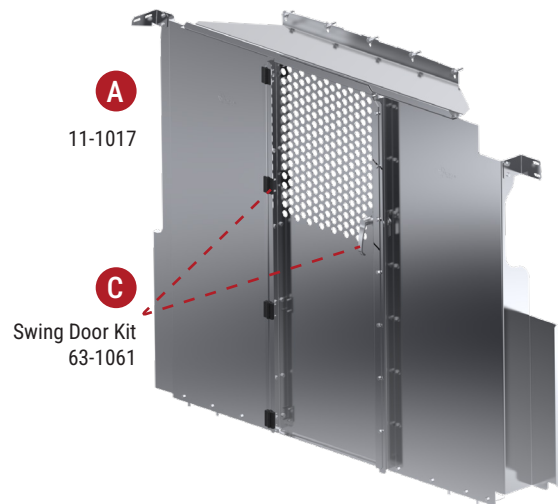
A well-installed aluminum partition enhances your van's functionality and gives it a professional, organized look that reflects your business's quality.



Partitions

A | FIXED PARTITIONS FOR NV

PART #	MODEL YEAR	DESCRIPTION
* 11-1017	12-21	Standard Roof NV – Driver Side Only Partition
11-1001	12-21	High Roof NV – Driver Side Only Partition
11-1018	12-21	Standard Roof NV – Passenger Side Only Partition
11-1002	12-21	High Roof NV – Passenger Side Only Partition
11-1013	12-21	Standard Roof NV – Solid Fixed Partition
11-1011	12-21	Standard Roof NV – Perforated Fixed Partition
11-1003	12-21	High Roof NV – Solid Fixed Partition
11-1014	12-21	High Roof NV – Perforated Fixed Partition



B | FIXED PARTITIONS FOR NV200

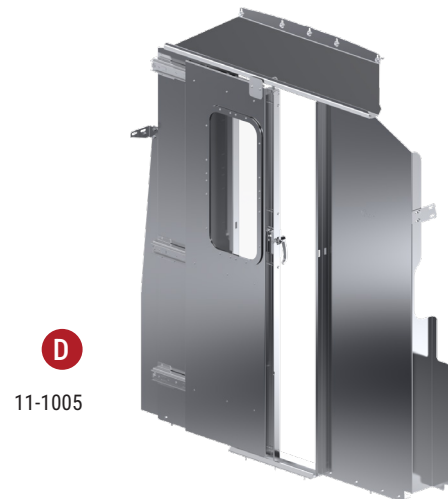
PART #	MODEL YEAR	DESCRIPTION
13-1004	13-21	NV200 – Driver Side Only Partition
13-1003	13-21	NV200 – Solid Fixed Partition
13-1002	13-21	NV200 – Perforated Fixed Partition

C | SWING DOOR KIT FOR FIXED PARTITION

PART #	DESCRIPTION
* 63-1061	Swing Door Kit for Fixed Partition

D | SLIDING DOOR PARTITIONS FOR NV

PART #	MODEL YEAR	DESCRIPTION
11-1009	12-21	High Roof NV – Solid Sliding Door Partition
11-1004	12-21	High Roof NV – Perforated Sliding Door Partition
* 11-1005	12-21	High Roof NV – Windowed Sliding Door Partition



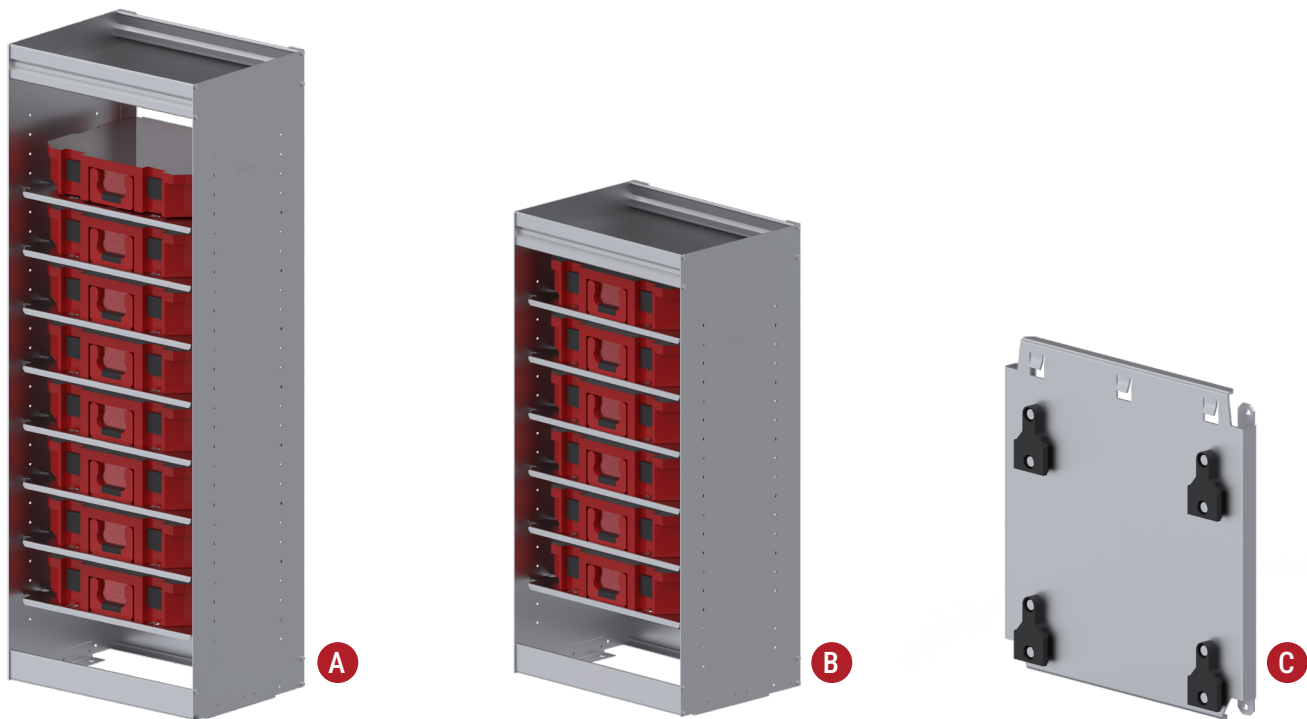
Introducing Milwaukee Packout™ Holders with Adjustable Shelves

Revolutionize the way you organize and transport your tools and equipment with **Westcan's** aluminum Milwaukee Packout™ **Holders**. Designed in various sizes and configurations exclusively for Milwaukee Packout™ parts, our packout holders offer a seamless integration into your van setup.

No matter the dimensions or layout of your van, we have the perfect solution to optimize your storage space and keep your gear organized.

Westcan packout holders with adjustable shelves will fit any size of packouts. With their robust construction and sleek design, the packout holders optimize space and enhance the professional look of your van interior.

Whether you're a tradesperson, a DIY enthusiast, or a contractor, Westcan's packout holder storage systems are built to endure the rigors of the job site.



PART #	BALLOON	DESCRIPTION	SIZES
51-6223	A	Adjustable 8 Place Milwaukee Packout™ Holder Kit	62" H x 16 1/2" W x 22 3/4" D
51-6224	B	Adjustable 6 Place Milwaukee Packout™ Holder Kit	46" H x 16 1/2" W x 22 3/4" D
51-6218	C	Single Milwaukee Packout™ System Shelf & Wall Adapter Plate	14" W x 14" D

Liners

NV

A | PHENOLIC FLOOR LINERS

PART #	MODEL YEAR	DESCRIPTION
11-6409	12-21	Phenolic Floor Liner

B | PLYWOOD WALL LINERS

PART #	MODEL YEAR	DESCRIPTION
11-6401	12-21	Standard Roof – Plywood Wall Liner
11-6403	12-21	High Roof – Plywood Wall Liner

C | PLYWOOD SLIDING DOOR LINERS (PARTIAL)

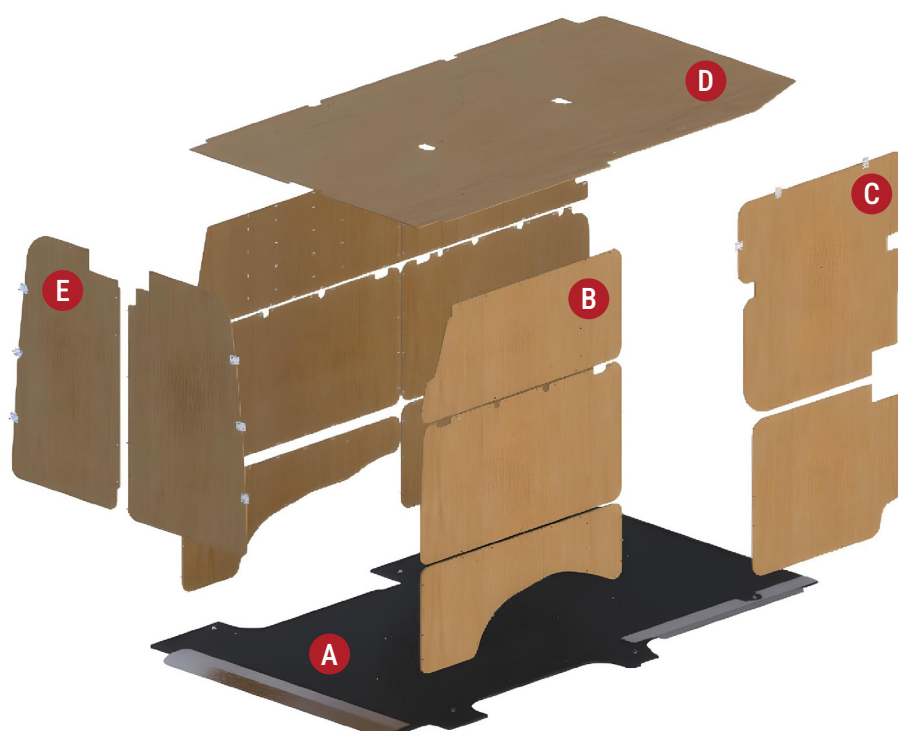
PART #	MODEL YEAR	DESCRIPTION
11-6407	12-21	Standard Roof – Plywood Passenger Side
11-6406	12-21	High Roof – Plywood Passenger Side

D | PLYWOOD CEILING LINERS

PART #	MODEL YEAR	DESCRIPTION
11-6402	12-21	Standard Roof – Plywood Ceiling Liner
11-6404	12-21	High Roof – Plywood Ceiling Liner

E | PLYWOOD REAR SWING DOOR LINERS (PARTIAL)

PART #	MODEL YEAR	DESCRIPTION
11-6408	12-21	Standard Roof – Plywood Rear Swing Door Liner
11-6405	12-21	High Roof – Plywood Rear Swing Door Liner



Liners

NV200

PHENOLIC FLOOR LINERS

PART #	MODEL YEAR	DESCRIPTION
13-6404	13-21	Phenolic Floor Liner

FULL PLYWOOD LINER KIT

PART #	MODEL YEAR	DESCRIPTION
13-6406	13-21	Ceiling, Walls and Doors

Built for Durability, Designed for Functionality

Whether you're a contractor, delivery driver, or tradesperson, Westcan's plywood liners offer the perfect blend of protection, insulation, and organization.

Invest in long-term durability and enhanced functionality for your cargo van with our expertly engineered liner kits.

Get yours today and safeguard your van from the inside out!

KEY FEATURES

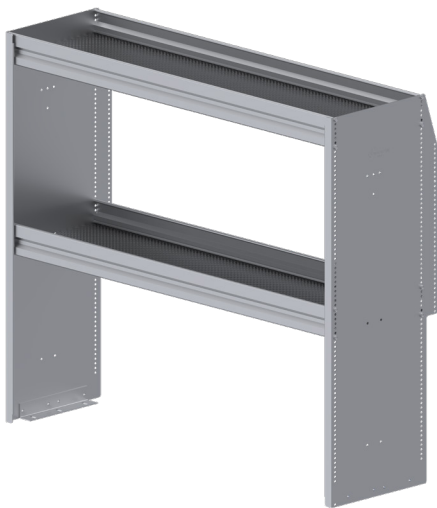
- CAD-designed & CNC cut
- Complete kits available
- Durable plywood construction: **Wall, door, and ceiling liners are made from 1/4" plywood with a sealed finish**
- Heavy-duty floor liners: **Floor liners are built from 1/2" honeycomb-textured phenolic Hexa Plywood**
- Increased tool mounting space

BENEFITS

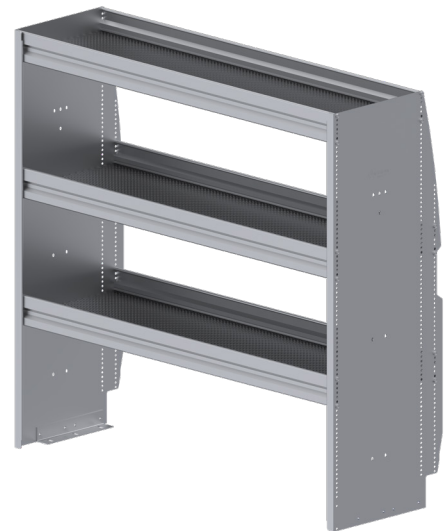
- Ultimate interior protection
- Enhanced insulation & comfort
- Optimized cargo space
- Easy installation
- Improved longevity & value



Standard Shelving Units



22-3445



22-3425

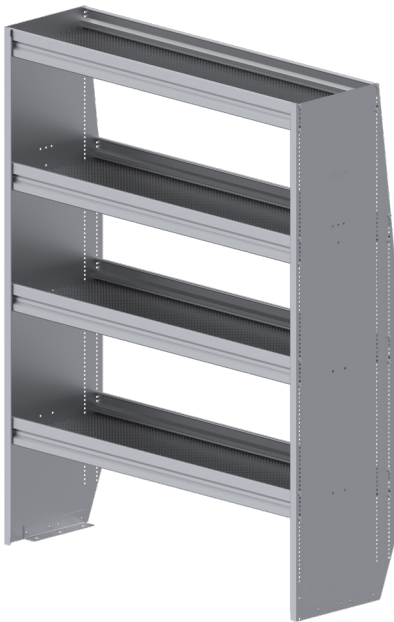
42" H NV200

PART #	L	D	H	SHELF QTY	SHELF DEPTHS
22-3443	24"	15 ⁵ / ₈ "	42"	2 Shelves	1 @ 12", 1 @ 14"
22-3444	36"	15 ⁵ / ₈ "	42"	2 Shelves	1 @ 12", 1 @ 14"
* 22-3445	48"	15 ⁵ / ₈ "	42"	2 Shelves	1 @ 12", 1 @ 14"
22-3430	24"	15 ⁵ / ₈ "	42"	3 Shelves	1 @ 12", 2 @ 14"
22-3405	36"	15 ⁵ / ₈ "	42"	3 Shelves	1 @ 12", 2 @ 14"
22-3406	48"	15 ⁵ / ₈ "	42"	3 Shelves	1 @ 12", 2 @ 14"

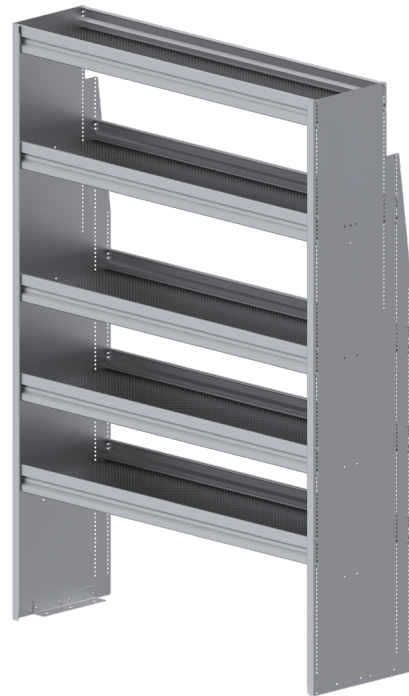
46" H NV

PART #	L	D	H	SHELF QTY	SHELF DEPTHS
22-3450	24"	16 ³ / ₈ "	46"	2 Shelves	1 @ 12", 1 @ 14"
22-3451	36"	16 ³ / ₈ "	46"	2 Shelves	1 @ 12", 1 @ 14"
22-3452	48"	16 ³ / ₈ "	46"	2 Shelves	1 @ 12", 1 @ 14"
22-3453	60"	16 ³ / ₈ "	46"	2 Shelves	1 @ 12", 1 @ 14"
22-3454	72"	16 ³ / ₈ "	46"	2 Shelves	1 @ 12", 1 @ 14"
22-3455	84"	16 ³ / ₈ "	46"	2 Shelves	1 @ 12", 1 @ 14"
22-3456	96"	16 ³ / ₈ "	46"	2 Shelves	1 @ 12", 1 @ 14"
22-3423	24"	16 ³ / ₈ "	46"	3 Shelves	1 @ 12", 2 @ 14"
22-3424	36"	16 ³ / ₈ "	46"	3 Shelves	1 @ 12", 2 @ 14"
* 22-3425	48"	16 ³ / ₈ "	46"	3 Shelves	1 @ 12", 2 @ 14"
22-3426	60"	16 ³ / ₈ "	46"	3 Shelves	1 @ 12", 2 @ 14"
22-3427	72"	16 ³ / ₈ "	46"	3 Shelves	1 @ 12", 2 @ 14"
22-3428	84"	16 ³ / ₈ "	46"	3 Shelves	1 @ 12", 2 @ 14"
22-3429	96"	16 ³ / ₈ "	46"	3 Shelves	1 @ 12", 2 @ 14"

Standard Shelving Units



22-3402



22-3410

62" H NV

PART #	L	D	H	SHELF QTY	SHELF DEPTHS
22-3436	24"	16 1/8"	62"	3 Shelves	1 @ 12", 2 @ 14"
22-3437	36"	16 1/8"	62"	3 Shelves	1 @ 12", 2 @ 14"
22-3438	48"	16 1/8"	62"	3 Shelves	1 @ 12", 2 @ 14"
22-3439	60"	16 1/8"	62"	3 Shelves	1 @ 12", 2 @ 14"
22-3440	72"	16 1/8"	62"	3 Shelves	1 @ 12", 2 @ 14"
22-3441	84"	16 1/8"	62"	3 Shelves	1 @ 12", 2 @ 14"
22-3442	96"	16 1/8"	62"	3 Shelves	1 @ 12", 2 @ 14"
22-3420	24"	16 1/8"	62"	4 Shelves	1 @ 12", 3 @ 14"
22-3401	36"	16 1/8"	62"	4 Shelves	1 @ 12", 3 @ 14"
* 22-3402	48"	16 1/8"	62"	4 Shelves	1 @ 12", 3 @ 14"
22-3403	60"	16 1/8"	62"	4 Shelves	1 @ 12", 3 @ 14"
22-3404	72"	16 1/8"	62"	4 Shelves	1 @ 12", 3 @ 14"
22-3421	84"	16 1/8"	62"	4 Shelves	1 @ 12", 3 @ 14"
22-3422	96"	16 1/8"	62"	4 Shelves	1 @ 12", 3 @ 14"

72" H NV

PART #	L	D	H	SHELF QTY	SHELF DEPTHS
22-3417	24"	15 5/8"	72"	5 Shelves	1 @ 10", 1 @ 12" 3 @ 14"
22-3409	36"	15 5/8"	72"	5 Shelves	1 @ 10", 1 @ 12" 3 @ 14"
* 22-3410	48"	15 5/8"	72"	5 Shelves	1 @ 10", 1 @ 12" 3 @ 14"
22-3411	60"	15 5/8"	72"	5 Shelves	1 @ 10", 1 @ 12" 3 @ 14"
22-3412	72"	15 5/8"	72"	5 Shelves	1 @ 10", 1 @ 12" 3 @ 14"
22-3418	84"	15 5/8"	72"	5 Shelves	1 @ 10", 1 @ 12" 3 @ 14"
22-3419	96"	15 5/8"	72"	5 Shelves	1 @ 10", 1 @ 12" 3 @ 14"

KEY FEATURES & BENEFITS

- Shelf decks are constructed using a durable 1/2" thick honeycomb-textured phenolic plywood and extruded aluminum lips
- Westcan's aluminum shelving units are Carb II compliant
- Load rating of 55 lbs per linear foot up to a maximum of 250 lbs per shelf
- Various accessories are available to customize shelving
- End panel shelf mounting locations are spaced 1/2" apart

Fold-Up Shelving Units

NV STANDARD ROOF

PART #	MODEL YEAR	L	D	H	SHELF QTY	SHELF DEPTHS
11-3713	12-21	31"	21 1/2"	46"	2 Shelves	1 @ 14", 1 @ 18" x 24"
11-3714	12-21	43"	21 1/2"	46"	2 Shelves	1 @ 14", 1 @ 18" x 36"
11-3715	12-21	55"	21 1/2"	46"	2 Shelves	1 @ 14", 1 @ 18" x 48"
11-3716	12-21	67"	21 1/2"	46"	2 Shelves	1 @ 14", 1 @ 18" x 60"
11-3717	12-21	79"	21 1/2"	46"	2 Shelves	1 @ 14", 1 @ 18" x 72"
11-3718	12-21	91"	21 1/2"	46"	2 Shelves	1 @ 14", 1 @ 18" x 84"
11-3719	12-21	31"	18 1/2"	46"	2 Shelves	2 @ 14" x 24"
11-3720	12-21	43"	18 1/2"	46"	2 Shelves	2 @ 14" x 36"
11-3721	12-21	55"	18 1/2"	46"	2 Shelves	2 @ 14" x 48"
11-3722	12-21	67"	18 1/2"	46"	2 Shelves	2 @ 14" x 60"
11-3723	12-21	79"	18 1/2"	46"	2 Shelves	2 @ 14" x 72"
11-3724	12-21	91"	18 1/2"	46"	2 Shelves	2 @ 14" x 84"

NV HIGH ROOF

PART #	MODEL YEAR	L	D	H	SHELF QTY	SHELF DEPTHS
11-3701	12-21	31"	21 1/2"	72"	3 Shelves	3 @ 18" x 24"
11-3702	12-21	43"	21 1/2"	72"	3 Shelves	3 @ 18" x 36"
11-3703	12-21	55"	21 1/2"	72"	3 Shelves	3 @ 18" x 48"
11-3704	12-21	67"	21 1/2"	72"	3 Shelves	3 @ 18" x 60"
11-3705	12-21	79"	21 1/2"	72"	3 Shelves	3 @ 18" x 72"
11-3706	12-21	91"	21 1/2"	72"	3 Shelves	3 @ 18" x 84"
11-3707	12-21	31"	23 1/2"	72"	3 Shelves	1 @ 20", 2 @ 18" x 24"
11-3708	12-21	43"	23 1/2"	72"	3 Shelves	1 @ 20", 2 @ 18" x 36"
11-3709	12-21	55"	23 1/2"	72"	3 Shelves	1 @ 20", 2 @ 18" x 48"
11-3710	12-21	67"	23 1/2"	72"	3 Shelves	1 @ 20", 2 @ 18" x 60"
11-3711	12-21	79"	23 1/2"	72"	3 Shelves	1 @ 20", 2 @ 18" x 72"
11-3712	12-21	91"	23 1/2"	72"	3 Shelves	1 @ 20", 2 @ 18" x 84"

NV HIGH ROOF

PART #	MODEL YEAR	L	D	H	SHELF QTY	SHELF DEPTHS
13-3701	13-21	31"	17 1/2"	46"	2 Shelves	2 @ 14" x 24"
13-3702	13-21	43"	17 1/2"	46"	2 Shelves	2 @ 14" x 36"

SINGLE FOLD UP SHELF KITS

14" D SHELVES	PART #	L	D
	67-3020	24"	14"
	67-3001	36"	14"
	67-3002	48"	14"
	67-3003	60"	14"
	67-3004	72"	14"
	67-3005	84"	14"

18" D SHELVES	PART #	L	D
	67-3021	24"	18"
	67-3006	36"	18"
	67-3007	48"	18"
	67-3008	60"	18"
	67-3009	72"	18"
	67-3010	84"	18"

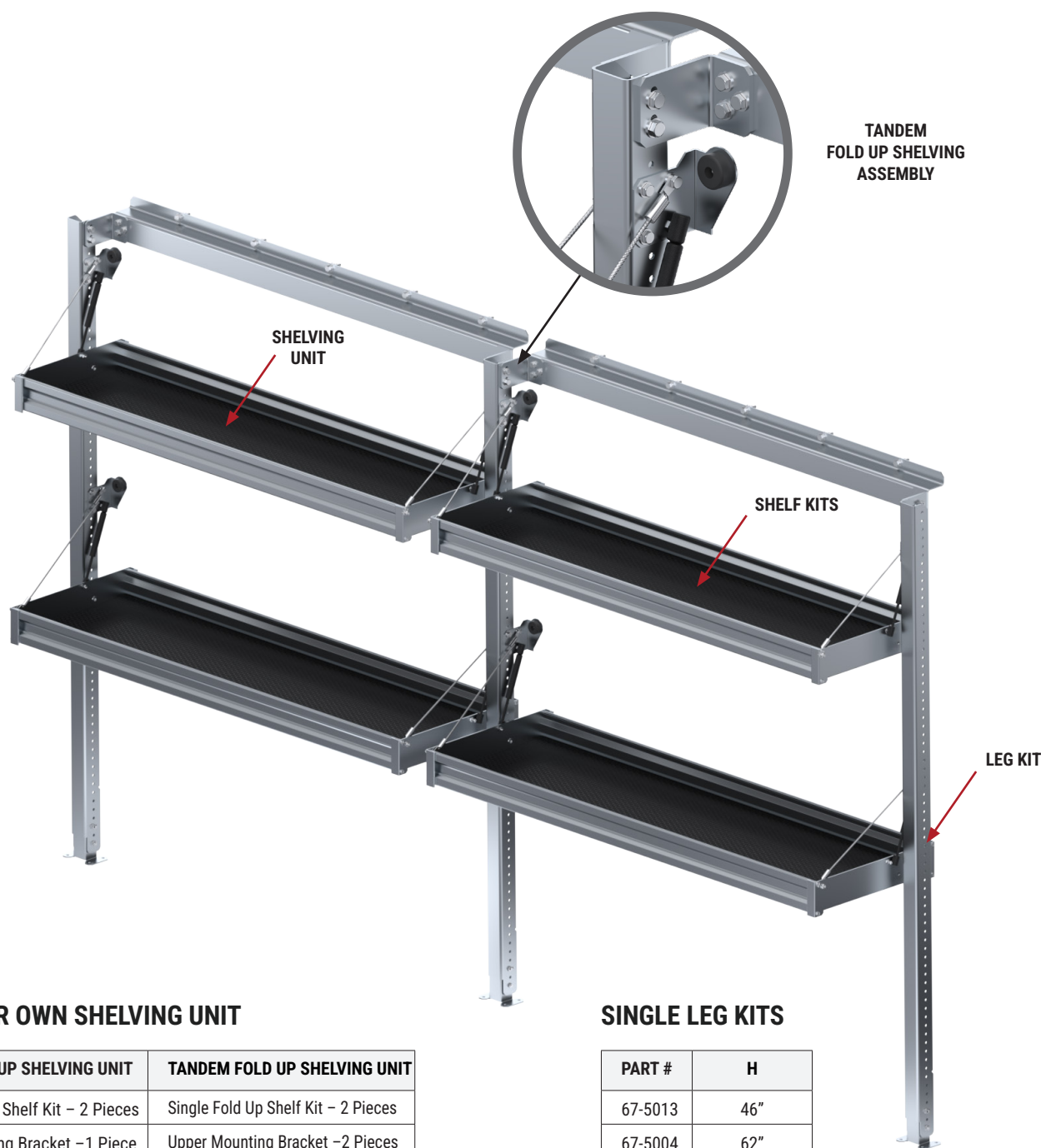
20" D SHELVES	PART #	L	D
	67-3022	24"	20"
	67-3011	36"	20"
	67-3012	48"	20"
	67-3013	60"	20"
	67-3014	72"	20"
	67-3015	84"	20"

UPPER MOUNTING BRACKET KITS

STANDARD/HIGH ROOF NV	PART #	L	D
	67-5063	24"	1 7/8"
	67-5064	36"	1 7/8"
	67-5065	48"	1 7/8"
	67-5066	60"	1 7/8"
	67-5067	72"	1 7/8"
	67-5068	84"	1 7/8"

NV200	PART #	L	D
	67-5069	24"	1 7/8"
	67-5070	36"	1 7/8"

Fold-Up Shelving Units



BUILD YOUR OWN SHELVING UNIT

SINGLE FOLD UP SHELVING UNIT	TANDEM FOLD UP SHELVING UNIT
Single Fold Up Shelf Kit – 2 Pieces	Single Fold Up Shelf Kit – 2 Pieces
Upper Mounting Bracket –1 Piece	Upper Mounting Bracket –2 Pieces
Single Leg Kits – 2 Pieces	Single Let Kits – 3 Pieces

SINGLE LEG KITS

PART #	H
67-5013	46"
67-5004	62"
67-5005	72"

NOTE: Please refer to the table below when building your own fold up shelving unit. Ensure that all shelf kits and upper mounting brackets are the same length when ordering.

Shelving Components

SINGLE SHELF KITS

10" D SHELVES	PART #	L	D
	31-1024	24"	10"
	31-1036	36"	10"
	31-1048	48"	10"
	31-1060	60"	10"
	31-1072	72"	10"
	31-1084	84"	10"
	31-1096	96"	10"

12" D SHELVES	PART #	L	D
	31-1224	24"	12"
	31-1236	36"	12"
	31-1248	48"	12"
	31-1260	60"	12"
	31-1272	72"	12"
	31-1284	84"	12"
	31-1296	96"	12"

14" D SHELVES	PART #	L	D
	31-1424	24"	14"
	31-1436	36"	14"
	31-1448	48"	14"
	31-1460	60"	14"
	31-1472	72"	14"
	31-1484	84"	14"
	31-1496	96"	14"

CENTER SUPPORT KITS

PART #	H
33-2042	42"
33-2046	46"
33-2062	62"

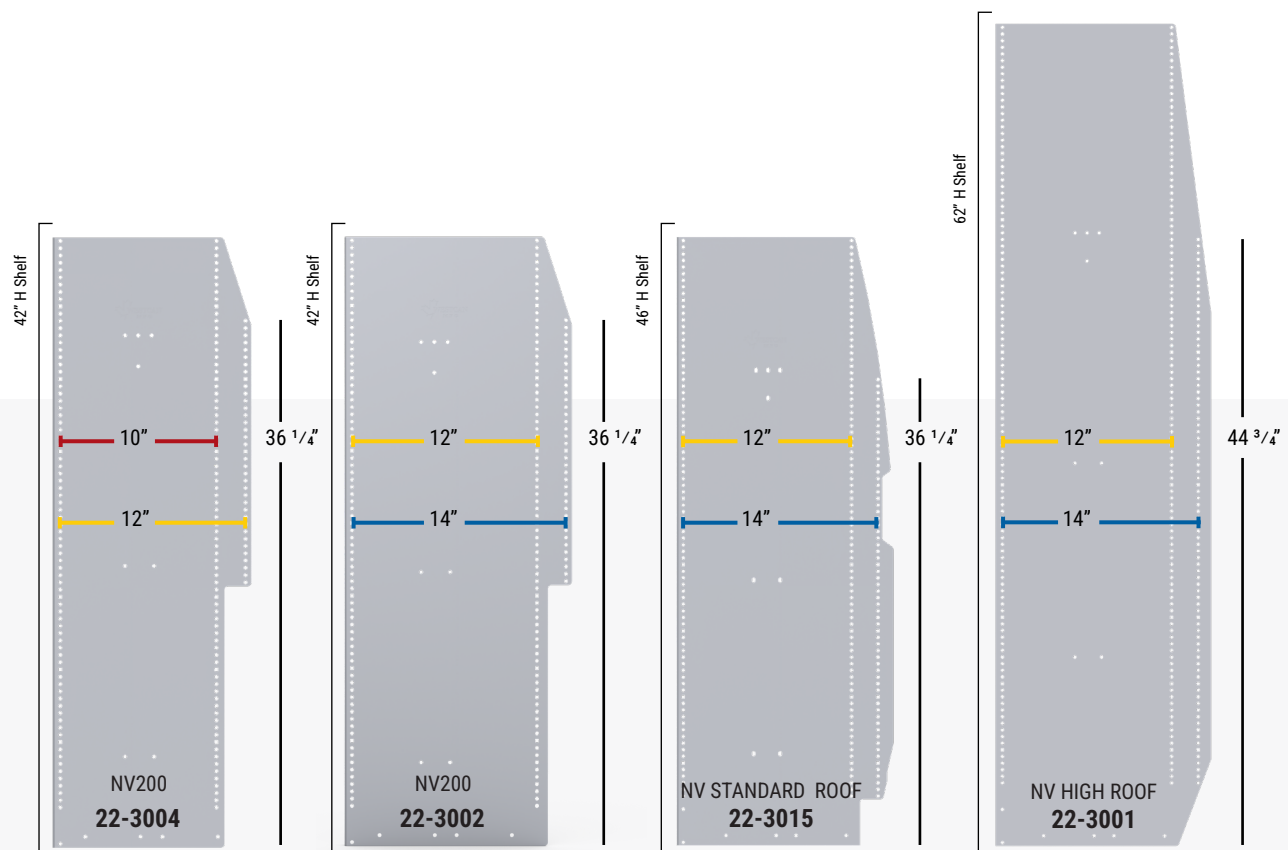
NOTE: Center supports are required for all shelving that's 72" long or more.

END PANEL KITS (SOLD IN PAIRS)

PART #	D	H	COMPATIBLE SHELVING DEPTHS
22-3015	16 ³ / ₈ "	46"	12" D, 14" D Shelving
22-3001	16 ¹ / ₈ "	62"	12" D, 14" D Shelving
22-3003	15 ⁵ / ₈ "	72"	10" D, 12" D, 14" D Shelving

Accessory & Shelf Mounting Holes

Westcan's aluminum universal end panel kits include multiple sets of pre-punched holes, designed for quick and easy mounting of accessories. All shelf mounting holes are spaced 1/2" apart.



Red Plastic Bins

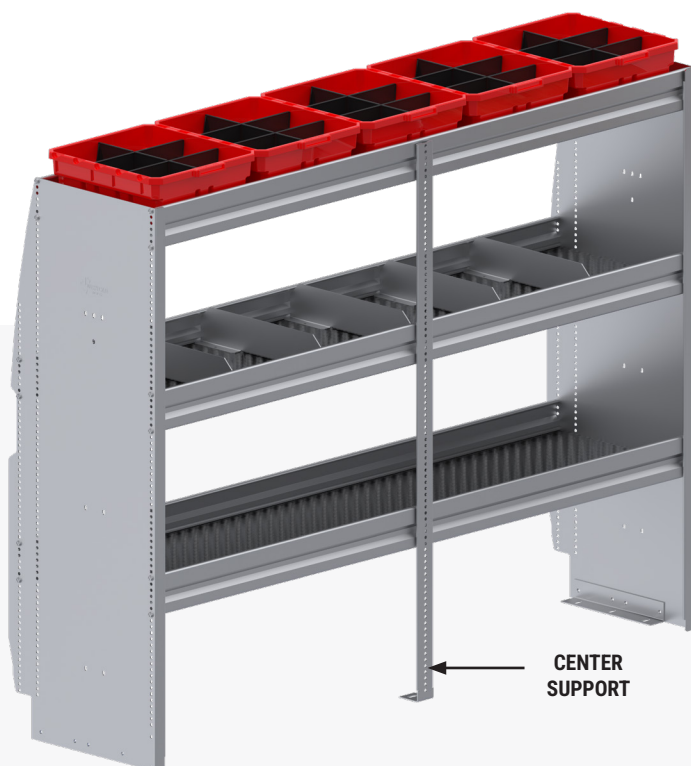
NEW RED PLASTIC BIN PACKAGES

12" D SHELVES	PART #	L	D	H	DESCRIPTION
	33-5027	11 3/4"	12"	4 3/4"	Single Bin
	33-5024	11 3/4"	12"	4 3/4"	For 12" x 24" Shelves – 2 Pieces
	33-5025	11 3/4"	12"	4 3/4"	For 12" x 36" Shelves – 3 Pieces
	33-5022	11 3/4"	12"	4 3/4"	For 12" x 48" Shelves – 4 Pieces
	33-5023	11 3/4"	12"	4 3/4"	For 12" x 60" Shelves – 5 Pieces
	33-5026	11 3/4"	12"	4 3/4"	For 12" x 72" Shelves – 6 Pieces
	33-5028	11 3/4"	12"	4 3/4"	For 12" x 84" Shelves – 7 Pieces
	33-5029	11 3/4"	12"	4 3/4"	For 12" x 96" Shelves – 8 Pieces
	33-5027-88	11 3/4"	12"	4 3/4"	24 Pack of 12" Bulk Buy

14" D SHELVES	PART #	L	D	H	DESCRIPTION
	33-5031	11 3/4"	14"	4 3/4"	Single Bin
	33-5030	11 3/4"	14"	4 3/4"	For 14" x 24" Shelves – 2 Pieces
	33-5032	11 3/4"	14"	4 3/4"	For 14" x 36" Shelves – 3 Pieces
	33-5033	11 3/4"	14"	4 3/4"	For 14" x 48" Shelves – 4 Pieces
	33-5034	11 3/4"	14"	4 3/4"	For 14" x 60" Shelves – 5 Pieces
	33-5035	11 3/4"	14"	4 3/4"	For 14" x 72" Shelves – 6 Pieces
	33-5036	11 3/4"	14"	4 3/4"	For 14" x 84" Shelves – 7 Pieces
	33-5037	11 3/4"	14"	4 3/4"	For 14" x 96" Shelves – 8 Pieces
	33-5031-88	11 3/4"	14"	4 3/4"	24 Pack of 14" Bulk Buy

Stay Organized. Work Smarter.

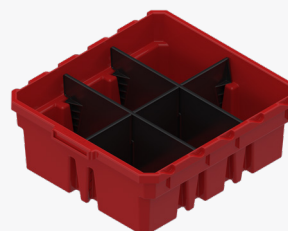
Westcan's new red plastic bins are built for superior organization and long-lasting durability. Come complete with 3 dividers for each bin. Designed for superior organization and easy access. Ideal for work vans, shops, and garages, these bins keep tools, parts, and hardware neatly arranged.



BINS WITH NO DIVIDERS

10" D SHELVES	PART #	L	D	H	DESCRIPTION
	33-5007	4 1/8"	8 7/8"	5"	For 10" x 36" Shelves – 6 Pieces
	33-5008	4 1/8"	8 7/8"	5"	For 10" x 48" Shelves – 8 Pieces
	33-5009	4 1/8"	8 7/8"	5"	For 10" x 60" Shelves – 10 Pieces

12" D SHELVES	33-5002	4 1/8"	11 3/16"	4"	For 12" x 36" Shelves – 8 Pieces
	33-5003	4 1/8"	11 3/16"	4"	For 12" x 48" Shelves – 11 Pieces
	33-5004	4 1/8"	11 3/16"	4"	For 12" x 60" Shelves – 14 Pieces
	33-5012	6 5/8"	11 3/16"	4"	For 12" x 36" Shelves – 5 Pieces
	33-5013	6 5/8"	11 3/16"	4"	For 12" x 48" Shelves – 7 Pieces
	33-5014	6 5/8"	11 3/16"	4"	For 12" x 60" Shelves – 9 Pieces



12"
PART #: 33-5027



14"
PART #: 33-5031

Work Benches

A | BUTCHER BLOCK WORK TOP KITS

PART #	L	D	H	DESCRIPTION
61-2415	24"	15"	1 3/4"	24" x 15"
* 61-3615	36"	15"	1 3/4"	36" x 15"
61-4815	48"	15"	1 3/4"	48" x 15"
61-6015	60"	15"	1 3/4"	60" x 15"

C | WORK BENCH END PANEL KITS (SOLD IN PAIRS)

PART #	D	H	DESCRIPTION
22-3009	15"	24"	12" D Shelving
22-3005	15"	32"	12" D Shelving
* 22-3012	15"	36"	12" D Shelving
22-3007	15"	42"	12" D Shelving

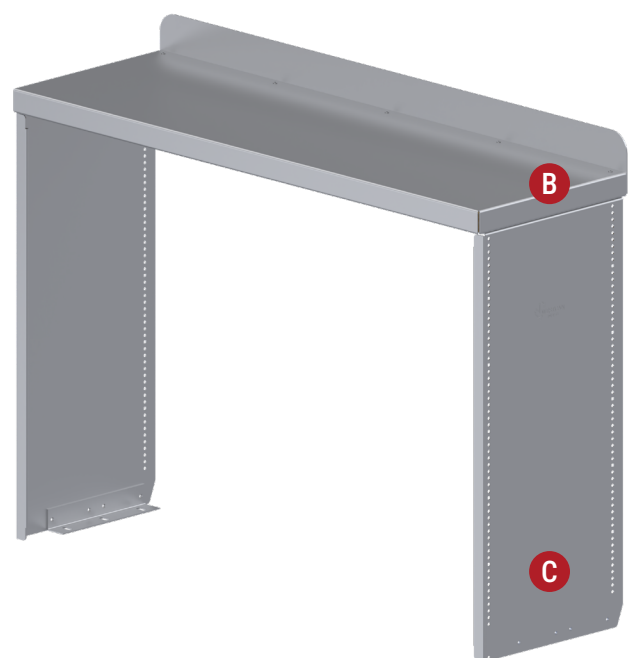
B | ALUMINUM WORK TOP KITS

	PART #	L	D	H	DESCRIPTION
15" D	60-2415	24"	15"	1 3/4"	24" x 15"
	* 60-3615	36"	15"	1 3/4"	36" x 15"
	60-4815	48"	15"	1 3/4"	48" x 15"
	60-6015	60"	15"	1 3/4"	60" x 15"
	60-7215	72"	15"	1 3/4"	72" x 15"

	PART #	L	D	H	DESCRIPTION
18" D	60-2418	24"	18"	1 3/4"	24" x 18"
	60-3618	36"	18"	1 3/4"	36" x 18"
	60-4818	48"	18"	1 3/4"	48" x 18"
	60-6018	60"	18"	1 3/4"	60" x 18"
	60-7218	72"	18"	1 3/4"	72" x 18"

Work Top Kits

Work top kits are available with either a 1 3/4" aluminum top reinforced with fir plywood for strength, or a 1 3/4" solid maple butcher block with a protective clear coat. Both options include a 2 3/4" high aluminum backsplash and can be mounted in shelving units.



Van Accessories

DATA FILE CABINET & CUP HOLDER KITS

PART #	L	D	H	DESCRIPTION
* 42-1600	10 1/2"	18"	16"	Data File Cabinet with Adjustable Legs
42-1630	8 3/4"	18"	16"	Data File Cabinet with Adjustable Legs
* 63-1012	11"	6 1/4"	5 1/2"	Data File Cabinet Cup Holder

Adjustable Leg Feature

Westcan's data file cabinets come with adjustable legs allowing flexible mounting on uneven surfaces. The legs can be adjusted individually.

Did You Know?

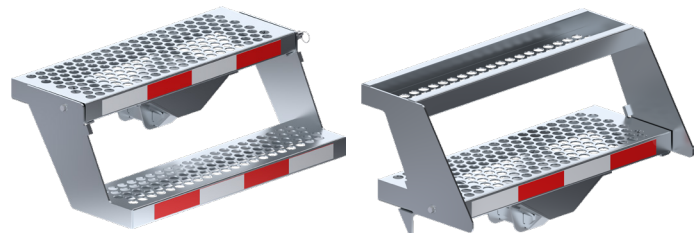
Westcan's data file cabinet cup holder can be mounted to either the front or the back of the data file cabinet.



RECEIVER STEPS

PART #	DESCRIPTION
* 63-1005	24" L Straight Receiver Step
63-1006	24" L 4" Drop Receiver Step
* 63-1013	28 7/8" L Double Fold-Up Step

All receiver steps mount into a 2" trailer hitch receiver and have a maximum load capacity of 275 lbs. The double fold-up step can be easily folded up for secure transportation.



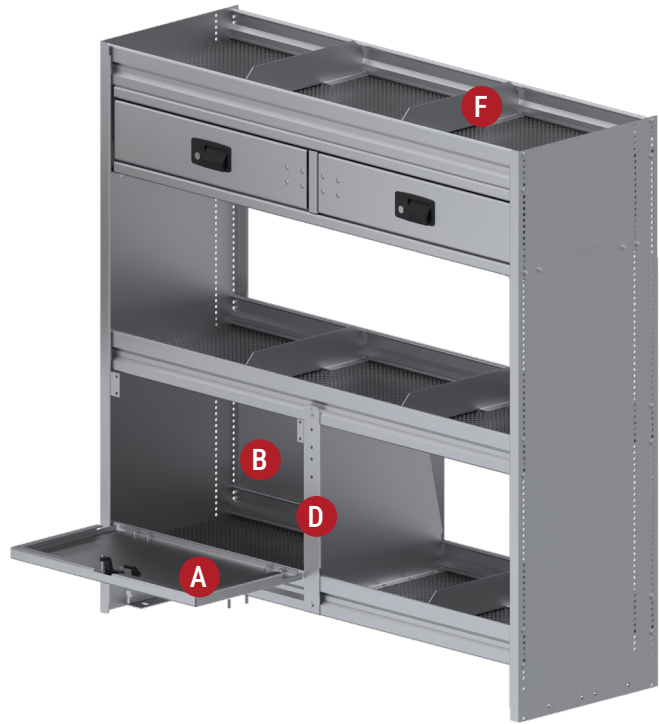
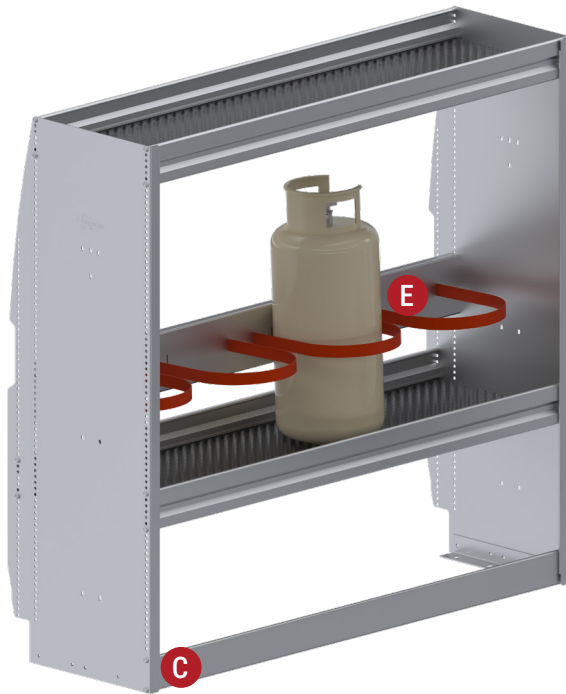
UNIVERSAL TRAFFIC CONE HOLDER KIT

PART #	DESCRIPTION
* 4001800	Traffic Cone Holder

Westcan's universal traffic cone holder is a low-cost solution to help keep the safety gear in place. The traffic cone holder has a maximum load rating of 35 lbs, and can be mounted on any bumper.



Shelving Accessories



A | LOCKING DOOR FRONT KITS

PART #	L	H
* 33-1202	24"	12"
33-1203	36"	12"
33-1204	48"	12"
33-1205	60"	12"
33-1502	24"	15"
33-1503	36"	15"
33-1504	48"	15"
33-1505	60"	15"

B | SHELF BACK KITS

PART #	L	H
* 33-1224	24"	12"
33-1236	36"	12"
33-1248	48"	12"
33-1260	60"	12"
33-1524	24"	15"
33-1536	36"	15"
33-1548	48"	15"
33-1560	60"	15"

C | RETAINER LIP KITS

PART #	L	H
33-2400	24"	3"
33-3600	36"	3"
* 33-4800	48"	3"
33-6000	60"	3"
33-7200	72"	3"
33-8400	84"	3"
33-9600	96"	3"

D | MID-SHELF BARRIER KITS

PART #	D	H
33-1212	10" - 12"	12"
33-1214	12" - 14"	12"
33-1512	10" - 12"	15"
33-1514	12" - 14"	15"

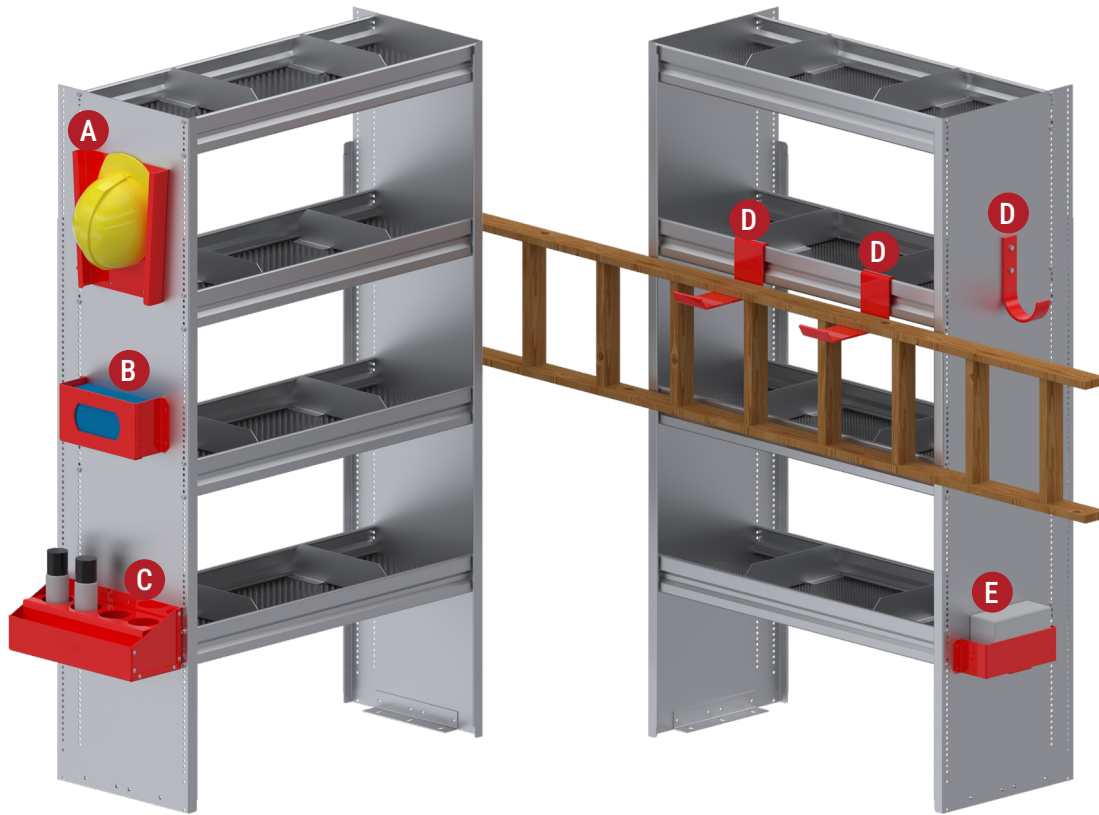
E | FREON TANK MOUNTING KITS

PART #	L	D	H	DESCRIPTION
52-3600	36"	1"	5"	3 Place In Shelf & Wall Mounted 30 lb Freon Tank Mounting Kit
* 52-4800	48"	1"	5"	4 Place In Shelf & Wall Mounted 30 lb Freon Tank Mounting Kit
52-6000	60"	1"	5"	5 Place In Shelf & Wall Mounted 30 lb Freon Tank Mounting Kit

F | ALUMINUM DIVIDER KITS

PART #	QTY	COMPATIBLE SHELVING DEPTHS
33-1010	10 Pcs	10" D Shelving
* 33-1012	10 Pcs	12" D Shelving
33-1014	10 Pcs	14" D Shelving

Shelving Accessories



A | HARD HAT HOLDER KIT

PART #	L	D	H	DESCRIPTION
* 63-1011-03	9"	2"	12"	Hard Hat Holder

B | DISPOSABLE GLOVE BOX HOLDER

PART #	DESCRIPTION
* 63-1085-03	Disposable Glove Box Holder

C | AEROSOL CAN HOLDER KITS

PART #	DESCRIPTION
63-1003-03	2 Place Spray Can Holder
* 63-1004-03	4 Place Spray Can Holder

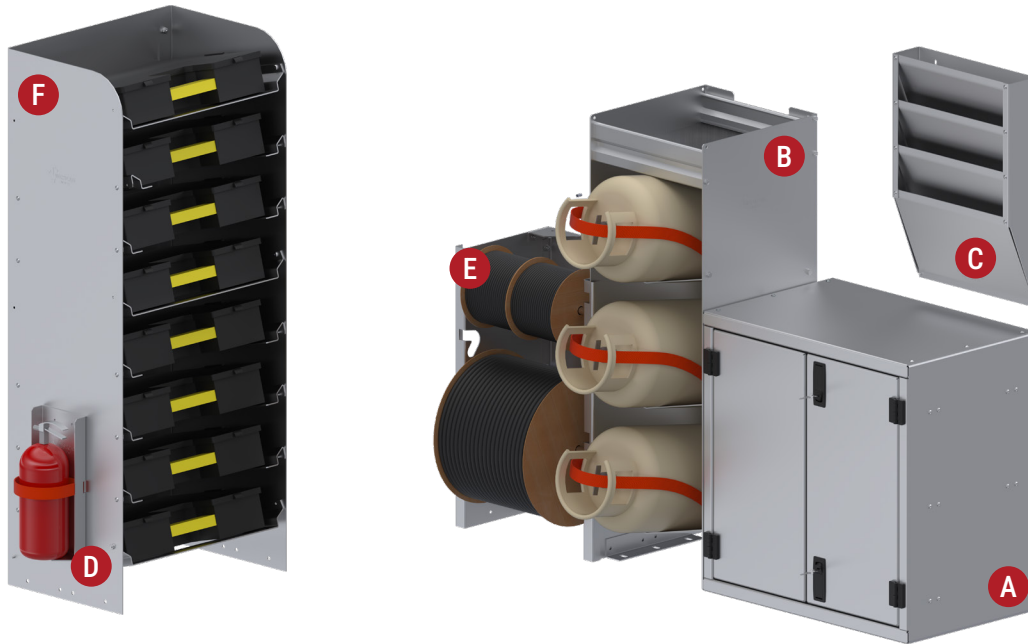
D | HOOKS AND HANGER KITS

PART #	L	D	H	DESCRIPTION
* 65-1001-03	3 ³ / ₈ "	8 ⁷ / ₁₆ "	4 ⁹ / ₁₆ "	Shelf Mounted Ladder Hanger Pair
65-1002-03	1 ¹ / ₂ "	5 ¹ / ₄ "	7 ¹ / ₂ "	Single Swivel Hook (4 ¹ / ₂ " Opening)
65-1005-03	3 ¹ / ₂ "	4 ¹ / ₂ "	7"	Single Shelf Hanger (4 ¹ / ₂ " Opening)
* 65-1007-03	1 ¹ / ₄ "	5 ¹ / ₄ "	7 ¹ / ₂ "	Fixed Hook (4 ¹ / ₂ " Opening)
3001200-03	3 ³ / ₈ "	14"	6 ⁵ / ₈ "	3 Hook Hanger
3001300-03	6 ³ / ₈ "	7"	7 ¹ / ₂ "	2 Hook Shovel and Rake Holder

E | MEDICAL KIT HOLDER KITS

PART #	L	D	H	DESCRIPTION
63-1009-03	17 ³ / ₈ "	4 ⁷ / ₈ "	7 ¹ / ₈ "	15 ¹ / ₄ " L x 4 ⁵ / ₈ " D x 7" H
* 63-1010-03	10 ¹ / ₂ "	3 ¹ / ₈ "	3 ¹ / ₈ "	8 ¹ / ₂ " L x 2 ⁷ / ₈ " D x 3" H

Storage Solutions



A | CABINETS

PART #	L	D	H	DESCRIPTION
42-1530	23 1/2"	15"	20"	2 Door Wedge Cabinet
42-1550	20"	15"	20"	Single Door Cabinet
* 42-1570	24"	15"	24"	2 Door Cabinet w/ Adjustable Shelf

D | CYLINDER STORAGE

PART #	L	D	H	DESCRIPTION
* 54-1000	5 1/4"	2 1/2"	12"	Fire Extinguisher Mount (Fits 4"-5" Ø)
54-1010	6"	2 1/2"	12"	Cylinder Mount (Fits 5"-10" Ø)
54-1020	9"	2 1/2"	12"	Cylinder Mount (Fits 10"-15" Ø)

B | STANDALONE FREON TANK STORAGE

PART #	L	D	H	DESCRIPTION
* 52-6100	13"	13"	38"	3 Place 30 lbs Freon Tank Storage
52-6200	13"	13"	62"	5 Place 30 lbs Freon Tank Storage

E | SPOOL HOLDERS

PART #	L	D	H	DESCRIPTION
51-3000	14"	10"	48"	4 Place Spool Holder
* 51-3001	14"	10"	24"	2 Place Spool Holder

C | LITERATURE STORAGE

PART #	L	D	H	DESCRIPTION
50-1001	13 1/4"	4"	7 1/2"	1 Place Literature Storage
50-1003	13 1/4"	6 3/4"	15"	3 Place Literature Storage
* 50-1004	13 3/4"	3 1/4"	20"	4 Place Literature Storage
50-1005	15 1/4"	5 5/8"	24"	3 Place Literature & Binder Storage
50-6204	10"	13"	62"	4 Level Literature Storage

F | PARTS TOTE HOLDERS & PLASTIC PARTS TOTES

PART #	L	D	H	DESCRIPTION
51-6201	17 3/4"	14"	5"	1 Place Parts Tote Holder
51-6203	19 5/8"	14"	25"	3 Place Parts Tote Holder
51-6205	19 5/8"	14"	35 1/2"	5 Place Parts Tote Holder
51-6208	19 5/8"	13 3/8"	62"	8 Place Parts Tote Holder
* 51-6209	19 7/8"	13 1/2"	46"	8 Place Parts Tote Holder
51-6202	17 3/8"	13"	3 1/2"	Parts Tote – 1 Piece
51-6217	17 3/8"	13"	3 1/2"	Parts Tote – 4 Pieces

Storage Solutions

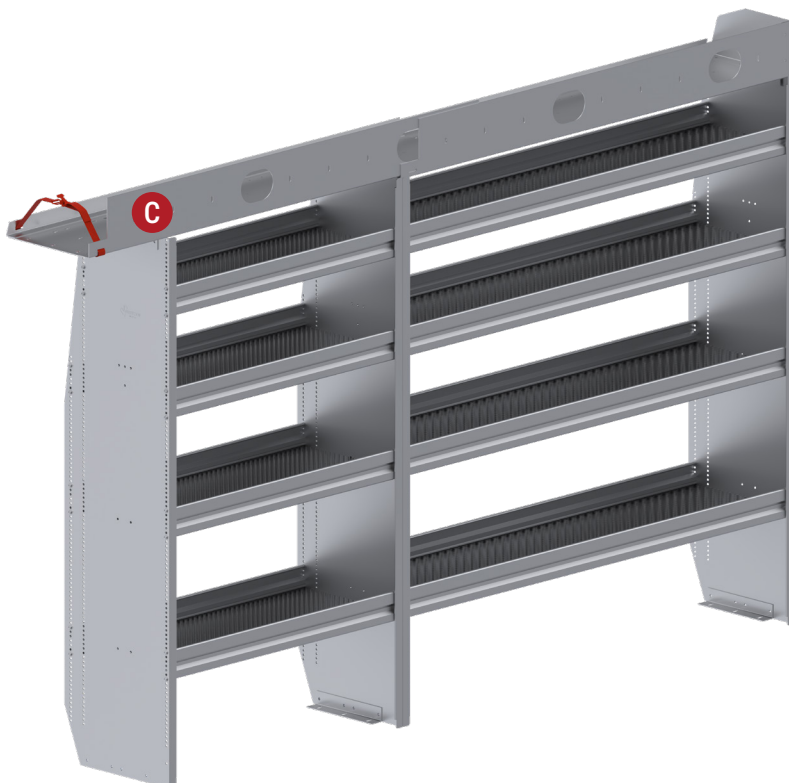


A | SECURITY CABINETS

PART #	L	D	H	DESCRIPTION
* 41-4650	24 1/4"	15 1/2"	46"	3 Shelf Security Cabinet
41-6250	24 1/4"	15 1/2"	62"	4 Shelf Security Cabinet

B | GARMENT LOCKERS

PART #	L	D	H	DESCRIPTION
41-4210	14 1/4"	15 1/2"	42"	Garment Locker
41-4610	14 1/4"	15 1/2"	46"	Garment Locker
41-4620	24 1/4"	15 1/2"	46"	Garment Locker
41-6210	14 1/4"	15 1/2"	62"	Garment Locker
* 41-6220	24 1/4"	15 1/2"	62"	Garment Locker



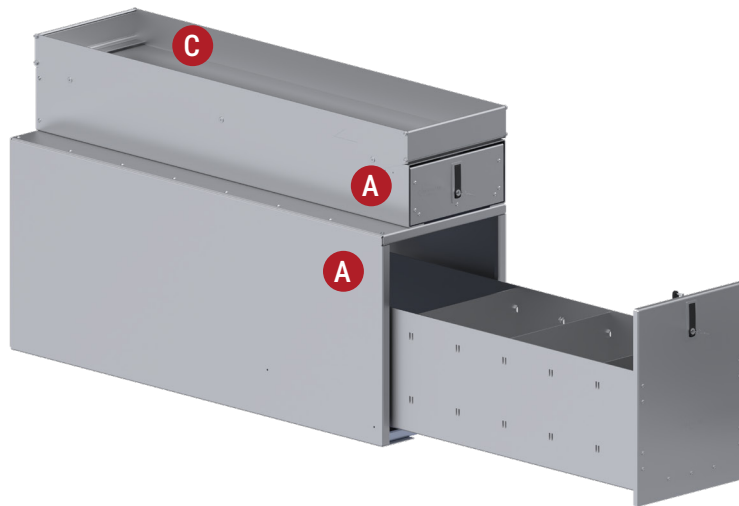
C | CONDUIT HOLDER

PART #	DESCRIPTION
* 63-1068	Shelving Mounted Conduit Holder

KEY FEATURES

- **All-Aluminum Construction** – Lightweight and rugged for long-lasting performance
- **Strap Secured End Cap** – Keep materials secured during transportation
- **Universal Mounting** – Extends from 60" to 114" for easy installation in most commercial vans
- **Sleek, Low-Profile Design** – Mounts inside to maximize vehicle clearance and minimize drag

Drawer Units



A | STACKABLE SINGLE DRAWER UNITS

PART #	L	D	H	DESCRIPTION
* 40-1010	16"	48"	20"	Single Drawer – 16" x 48"
40-1020	16"	36"	20"	Single Drawer – 16" x 36"
40-1030	14"	48"	16"	Single Drawer – 14" x 48"
* 40-1040	12"	48"	6"	Single Drawer – 12" x 48"
40-1050	14"	36"	16"	Single Drawer – 14" x 36"
40-1060	12"	36"	6"	Single Drawer – 12" x 36"

C | TOP TRAY KITS

PART #	L	D	H	DESCRIPTION
40-1015	16"	48"	3"	Top Tray Kit – 16" x 48"
40-1025	16"	36"	3"	Top Tray Kit – 16" x 36"
40-1035	14"	48"	3"	Top Tray Kit – 14" x 48"
* 40-1045	12"	48"	3"	Top Tray Kit – 12" x 48"
40-1055	14"	36"	3"	Top Tray Kit – 14" x 36"
40-1065	12"	36"	3"	Top Tray Kit – 12" x 36"

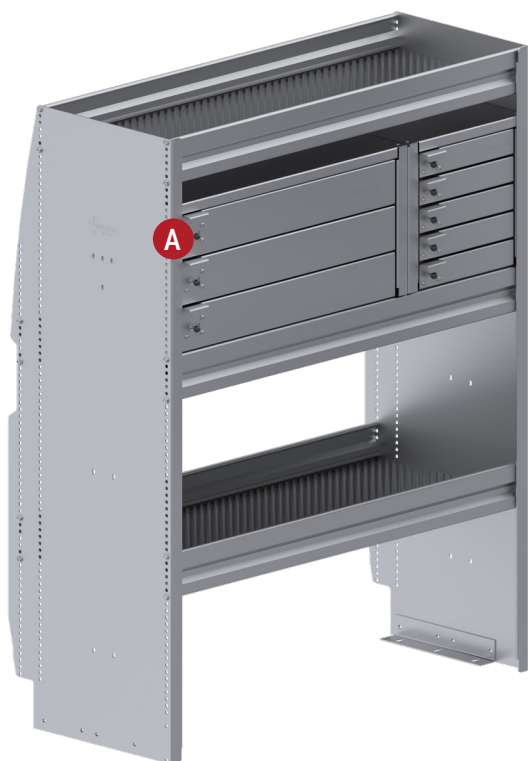
B | MULTI-DRAWER UNITS

PART #	L	D	H	DESCRIPTION
40-1110	15"	15"	24"	4 Drawer – 15" x 15"
40-1120	24"	15"	24"	4 Drawer – 24" x 15"
40-1130	37 5/8"	18 1/8"	47 1/4"	6 Drawer – 37 5/8" x 18 1/8"
* 40-1140	24 3/8"	18 3/8"	56 1/4"	8 Drawer – 24 3/8" x 18 3/8"
40-1150	18 1/4"	18 1/4"	35 1/2"	4 Drawer – 18 1/4" x 18 1/4"
40-1170	18 1/4"	18 1/4"	28 1/2"	6 Drawer – 18" x 18"

C | TOP TRAY KITS

PART #	L	D	H	DESCRIPTION
40-1115	15"	15"	4 1/2"	Top Tray Kit – 15" x 15"
40-1125	23 1/2"	15"	4 1/2"	Top Tray Kit – 23 1/2" x 15"
40-1135	37 7/8"	17 1/2"	4 1/2"	Top Tray Kit – 37 7/8" x 17 1/2"
40-1145	24"	18"	4 1/2"	Top Tray Kit – 24" x 18"
40-1155	18"	18"	4 1/2"	Top Tray Kit – 18" x 18"
40-1175	18 1/4"	18 1/4"	4 1/2"	Top Tray Kit – 18 1/4" x 18 1/4"

Drawer Units



A | LIGHT DUTY DRAWER UNITS

PART #	L	D	H	DESCRIPTION	DRAWER SIZE
* 40-1215	11 3/4"	11 3/4"	13 3/4"	5 Drawer	8 1/2 L x 10 D x 1 1/2 H
40-1225	23 3/4"	11 3/4"	13 3/4"	5 Drawer	20 1/2 L x 10 D x 1 1/2 H
* 40-1235	23 3/4"	11 3/4"	13 3/4"	3 Drawer	20 1/2 L x 10 D x 3 H
40-1245	11 3/4"	11 3/4"	13 3/4"	3 Drawer	8 1/2 L x 10 D x 3 H

B | IN SHELF DRAWER UNITS

	PART #	L	D	H	DESCRIPTION
UNDER SHELF	* 40-1340	46"	14 1/4"	7 3/8"	Under Shelf Side by Side 2 Drawer Unit for 48" L Shelving Unit
	40-1350	34"	14 1/4"	7 3/8"	Under Shelf Side by Side 2 Drawer Unit for 36" L Shelving Unit
	40-1360	58"	14 1/4"	7 3/8"	Under Shelf Side by Side 2 Drawer Unit for 60" L Shelving Unit
	40-1380	36"	12 3/4"	6"	Under Shelf Single Drawer Unit for 36" L Shelving Unit
IN SHELF	40-1210	22 7/8"	14"	12 1/8"	In Shelf 2 Drawer Unit
	40-1230	22 7/8"	14"	15 1/8"	In Shelf 2 Drawer Unit



Drawer Units

Westcan offers a comprehensive range of aluminum drawer units designed to meet diverse storage requirements. Whether integrated within shelving or used as standalone solutions, these units deliver reliable performance in any workspace.

Each drawer unit is constructed from marine-grade aluminum and equipped with ball-bearing slides to ensure smooth, consistent drawer operation. All models include individual locking drawers and removable aluminum dividers for organized, secure storage. An optional top tray is available to provide additional storage capacity.

- **Stackable Large Single Drawer Units** (Models 40-1010, 40-1020, 40-1030, 40-1050) — rated at 350 lbs
- **Multi-Drawer Units** — premium heavy-duty keyed locking, rated at 100 lbs per drawer
- **Light-Duty Drawer Units** — non-keyed locking, rated at 20 lbs per drawer



CONTACT US

Local: 1-604-795-7733

Toll Free: 1-877-795-7733

info@westcanmanufacturing.com

